



Authorized Sales & Service  
**J. HERBERT CORPORATION**  
 Call 1-800-255-0588  
 407-846-0588 Fax: 846-1066  
 info@jherbertcorp.com  
 Visit us online:  
 www.jherbertcorp.com

# J-900 SERIES

## WALL BRACKET JIB CRANE

### CAPACITY UP TO 5 TONS

The Abell-Howe J-900 Series was developed to be an all purpose tie rod wall mount jib for heavy duty industrial applications.

### BENEFITS & FEATURES

#### CAPACITIES

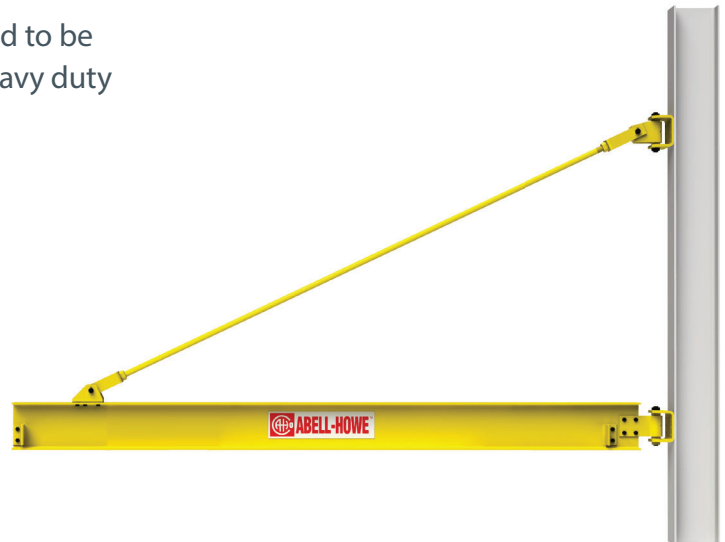
1/2 Ton to 5 Tons.  
 Boom Lengths up to 30 ft.

#### SPECIFICATIONS

Up to 200 degree rotation.  
 Fabricated, steel wall bracket fittings with bearings.  
 Threaded tie rods provide take-up for boom leveling.  
 End stops at both ends of the boom to limit trolley travel.

#### OPTIONAL ACCESSORIES

Rotational stops  
 Available in Motorized versions (consult factory)  
 Wind or Position Lock  
 Galvanizing  
 Spark-resistant and/or explosion proof construction for hazardous locations  
 Messenger wire assembly  
 Electric, Air or Hand-gearred rotation.



## J-900 WALL BRACKET JIB CRANE

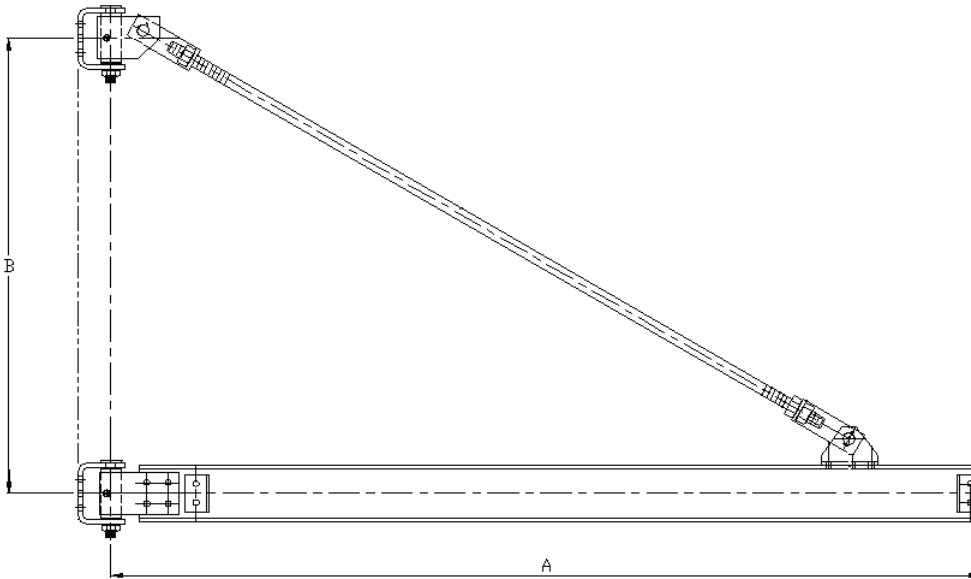


Chart represents a sample of J-900 Sizes & Capacities

Capacity (Tons)	Model #	Catalog #	Boom Length (A)	Hinge Spacing (B)
1/2	J-900 - JB1F	900002	10' - 0"	3' - 0"
	J-900 - JB1F	900003	12' - 0"	3' - 9"
	J-900 - JB1F	900004	14' - 0"	4' - 6"
	J-900 - JB1F	900005	16' - 0"	5' - 6"
	J-900 - JB1F	900006	18' - 0"	6' - 0"
	J-900 - JB1F	900007	20' - 0"	6' - 6"
1	J-900 - JB1F	900014	10' - 0"	3' - 0"
	J-900 - JB1F	900015	12' - 0"	3' - 9"
	J-900 - JB1F	900016	14' - 0"	4' - 6"
	J-900 - JB1F	900017	16' - 0"	5' - 6"
	J-900 - JB1F	900018	18' - 0"	6' - 0"
	J-900 - JB1F	900019	20' - 0"	6' - 6"
2	J-900 - JB2F	900026	10' - 0"	3' - 0"
	J-900 - JB2F	900027	12' - 0"	3' - 9"
	J-900 - JB2F	900028	14' - 0"	4' - 6"
	J-900 - JB2F	900029	16' - 0"	5' - 6"
	J-900 - JB2F	900030	18' - 0"	6' - 0"
	J-900 - JB2F	900031	20' - 0"	6' - 6"
3	J-900 - JB3F	900038	10' - 0"	3' - 3"
	J-900 - JB3F	900039	12' - 0"	4' - 0"
	J-900 - JB3F	900040	14' - 0"	4' - 9"
	J-900 - JB3F	900041	16' - 0"	5' - 6"
	J-900 - JB3F	900042	18' - 0"	6' - 3"
	J-900 - JB3F	900043	20' - 0"	7' - 0"

Optional Models:

Part #	Description
J-904FMD	Foundation Mount - Electric Motor Drive
J-904FAMD	Foundation Mount - Air Motor Drive
J-904FHG	Foundation Mount - Hand Geared