

# Protean™ Radio Remote Control

Economical Protean™ Radio Remote Controls provide safe and reliable operation for many types of electrical machinery and crane controls. These FM radios have internal antennas for a 330 foot (100 meter) range and many advanced security and reliability features. Kits include one receiver and two transmitters, as noted below.

## Protean Transmitters



### Specifications

- Runs on 2 standard "AA" alkaline batteries; low power consumption ensures long battery life. Includes low power indicator
- All single-speed buttons
- Jammed button detection
- Shock resistant case
- Weighs only 0.34 lb (155 g) with batteries
- FCC Part 15 - No license required
- NEMA 4 (IP65) enclosure

## Protean Receivers



### Specifications

- Multiple supply voltages: DC: 12~24 Volts DC  
 AC: 24V/48V, 48V/110V, 110V/220V, plus or minus 10%,  
 50/60 Hz (Default is 110/220 with 110 selected)
- Independent common configuration for mixed control voltage applications
- Power-on/mainline contact
- LED display of power and contact closure status
- Sensitivity: Approximately -105 dBm
- Prewired cable, 6 feet long (1.83 m)
- Control relay rating: 10A @ 125 VAC; 5A @ 250 VAC; 8A @ 30 VDC
- 4-point shock mount designed for demanding mobile and industrial applications

## Four Button Protean Radio Kits

Operation Description	Voltage Type	No. of Transmitters	Part No.	Wt lb (kg)
Normally-open, single-speed buttons, with a stop, start/auxiliary, up and down buttons. The radio is suitable for a single motion (2 directions) and also provides a power-on (mainline) connection. The start button also doubles as an additional auxiliary relay.	AC	2	700PRO4D	3.08 (1.40)
	DC	2	700PRO4D-DC	3.08 (1.40)
	24 VAC	2	700PRO4D-24	3.08 (1.40)

## Six Button Protean Radio Kits

Operation Description	Voltage Type	No. of Transmitters	Part No.	Wt lb (kg)
Normally-open, single-speed buttons, with a stop, start/auxiliary, up and down buttons. The radio is suitable for two motions (4 directions) and provides a power-on (mainline) connection. The start button also doubles as an additional auxiliary relay.	AC	2	700PRO6D	3.08 (1.40)
	DC	2	700PRO6D-DC	3.08 (1.40)
	24 VAC	2	700PRO6D-24	3.08 (1.40)

**Please Note:** For spare transmitter orders, we will need the original serial number for proper matching of transmitter to receiver.  
 Protean Series radios will also need channel number (1 through 38) specified at time of order.

Visit [www.conductix.us](http://www.conductix.us) for the most current information.

# Protean™ Radio Remote Control

## Eight Button Radio Kit

Operation Description	Voltage Type	No. of Transmitters	Part No.	Wt lb (kg)
Normally-open, single-speed buttons, with a stop, start/auxiliary, up and down buttons. The radio is suitable for three motions (6 directions) and provides a power-on (mainline) connection. The start button also doubles as an additional auxiliary relay.	AC	2	700PR08D	3.08 (1.40)
	DC	2	700PR08D-DC	3.08 (1.40)
	24 VAC	2	700PR08D-24	3.08 (1.40)

## Numbered Transmitter Face Plates

Each face plate shown is pre-numbered for 4, 6 or 8 button transmitters.



Description	Part No.
4-Button Face Plate	701P0045
6-Button Face Plate	701P0065
8-Button Face Plate	701P0085

## Button Face Plates with Legend

The kits shown below contain either a 4, 6 or 8 button face plate with “blank” spots for legend names and one legend sheet as shown to the below.

To set up the face plate, choose the appropriate label from the legend sheet and apply it to the underside of the faceplate before applying the faceplate to the transmitter. The faceplate is clear in the open button positions allowing the label to show through.

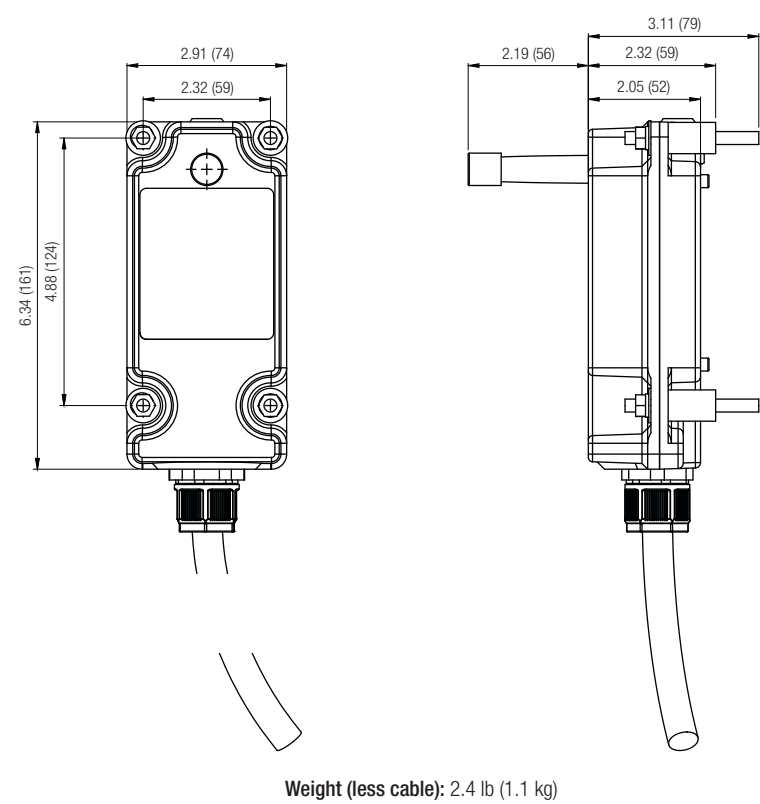


Description	Part No.
4-Button Face Plate, with 2 blank spots	701P0219
6-Button Face Plate, with 4 blank spots	701P0220
8-Button Face Plate, with 6 blank spots	701P0221

UP	DOWN	ON	OFF
IN	OUT	START	STOP
HIGH	LOW	OPEN	CLOSE
RAISE	LOWER	FAST	SLOW
RIGHT	LEFT	NORTH	SOUTH
FWD	REV	EAST	WEST
FWD	REV	↑	↓

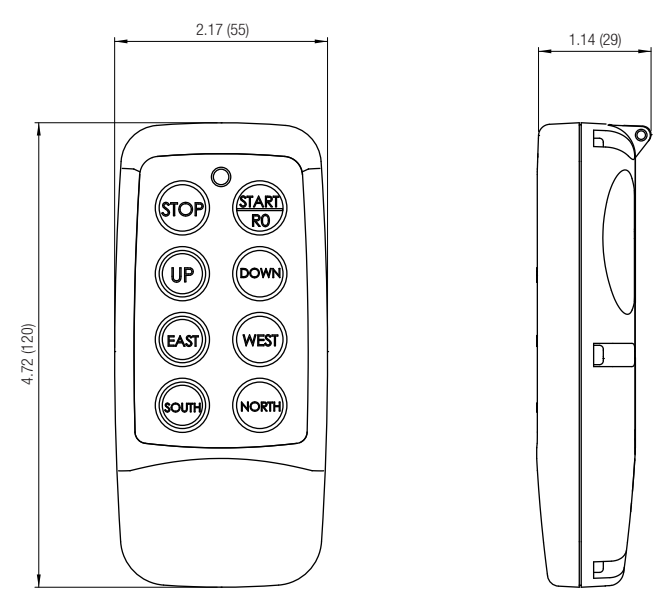
# Protean™ Dimensions

## Protean™ Receiver



Weight (less cable): 2.4 lb (1.1 kg)

## Protean™ Transmitter

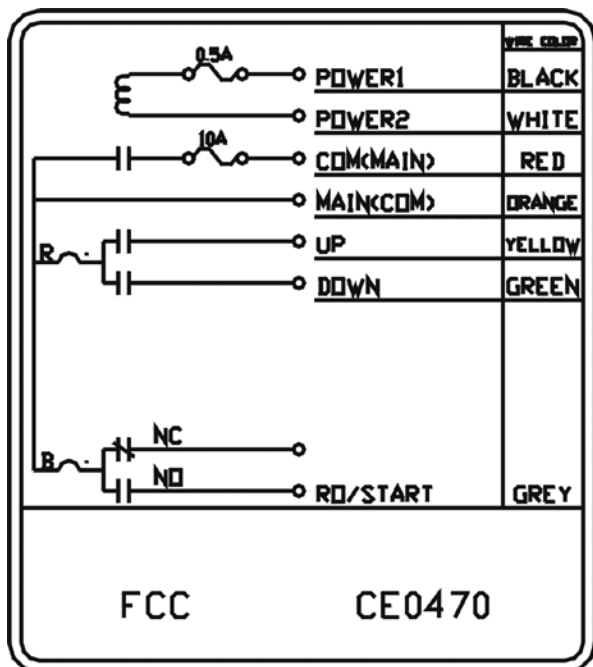


Weight: 0.34 lb (0.2 kg) Including Batteries

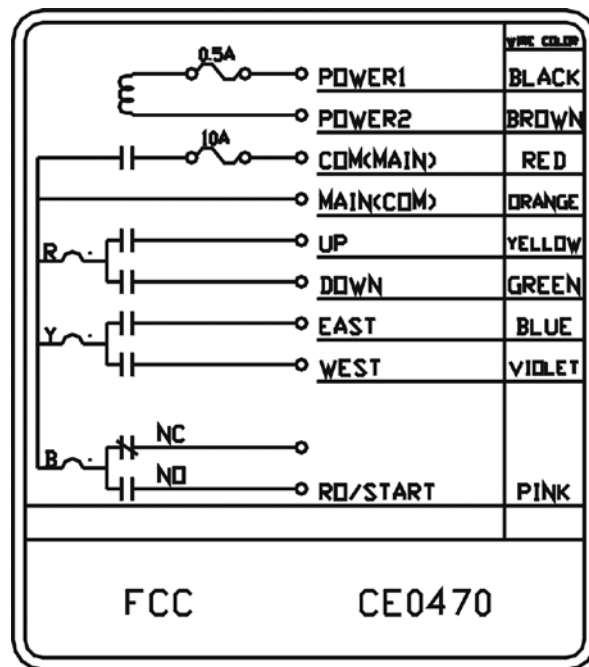
# Protean™ Wiring Diagrams

AC type wiring is shown below. Wiring for DC units is the same but Power1 and Power2 are connected to 12-24 VDC. FCC ID#: NCTSAGA1-L8

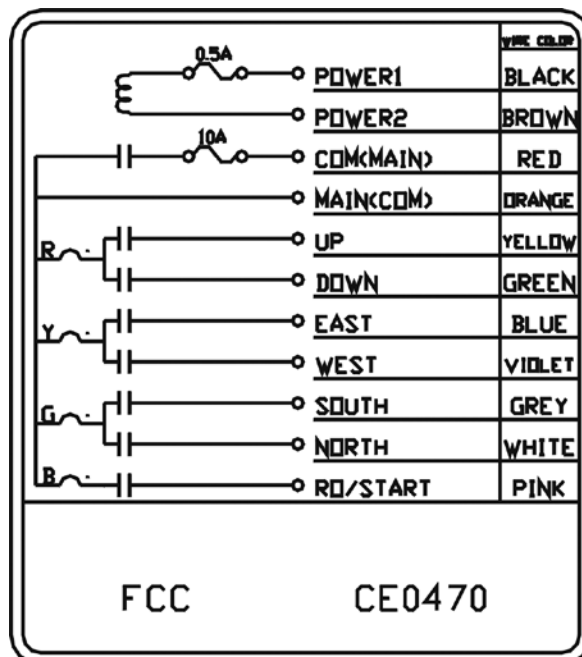
4-Button Wiring Schematic (AC Type)



6-Button Wiring Schematic (AC Type)



8-Button Wiring Schematic (AC Type)



# Protean™ HT Radio Remote Control

The Protean™ HT Radio Remote Control is the ideal radio for basic hoist and trolley control. It is economical, yet rugged and reliable for many applications. The HT Transmitter is shock resistant and uses two AA alkaline batteries.

## Protean™ HT Transmitter



701PROL6B-TX

### Transmitter Specifications

- NEMA 4 rated (IP65), shock resistant enclosure
- 4 two-speed buttons with detents: Up, Down, East, West
- Large mushroom E-stop switch
- Removable water-proof key.
- Range: Up to 330 feet
- Dimensions: 6.5H x 2.0W x 2.25D (165 x 51 x 57)

## Protean™ HT Receiver



### Receiver Specifications

- Dimensions: 6.5H x 3.0W x 2.4D (165 x 76 x 60)
- NEMA 4 rated (IP65), shock resistant enclosure
- Pre wired with 6 ft (1.83 meters) of cable
- Shock-resistant mounting - four bolts with stock absorbers
- Power Options: DC Type: 12 ~ 24 Volts DC  
AC: 24V/48V, 48V/110V, 110V/220V, plus or minus 10%, 50/60 Hz.  
Default is 110/220 VAC, 110 VAC selected
- Relay Ratings: 10A @ 125 VAC  
5A @ 250 VAC  
8A @ 30 VDC

## Protean™ HT Radio Kit

Input Power	No. of Transmitters	Part No.
AC	2	700PRO6DHT
DC	2	700PRO6DHT-DC
24 VAC	2	700PRO6DHT-24

**Please Note:** For spare transmitter orders, we will need the original serial number for proper matching of transmitter to receiver.  
Protean Series radios will also need Channel Number 1-38 specified at time of order.

# Protean™ L8 Radio Remote Control

The L8 Series Radio Remote Control is suitable for applications that require three motions, such as a hoist, trolley, and bridge motions for an overhead crane, but only requires single-speed operation. The L8 is ruggedly built available for either AC or DC operation.

## Protean™ L8 Transmitter



P.N. 701L8001

### Transmitter Specifications

- Dimensions: 6.5H x 2.0W x 2.25D (165 x 51 x 57)
- 6 single-speed buttons: Up/Down, East/West, North/South
- Uses 2 AA alkaline batteries
- Shock-resistant design
- Large mushroom E-stop switch
- Removable water-proof key
- Range: Up to 330 feet

## Protean™ L8 Transmitter



### Receiver Specifications

- Dimensions: 6.5H x 3W x 2.4D (165 x 76 x 60)
- NEMA 4 rated (IP65), Shock resistant enclosure
- Pre wired with six feet (1.83 meters) of cable
- Shock-resistant mounting; four bolts with shock absorbers
- Power Options: DC Type: 12 ~ 24 Volts DC (or 24 Volts AC)  
 AC: 24V/48V, 48V/110V, 110V/220V, plus or minus 10%, 50/60 Hz.  
 Default 110/220V, with 110 V selected
- Relay Ratings: 10A @ 125 VAC  
 5A @ 250 VAC  
 8A @ 30 VDC

## Protean™ L8 Radio Kit

Input Power	No. of Transmitters	Part No.
AC	2	700PROL8BD
DC	2	700PROL8BD-DC
24 VAC	2	700PROL8BD-24

**Please Note:** For spare transmitter orders, we will need the original serial number for proper matching of transmitter to receiver.  
 Protean Series radios will also need Channel Number 1-38 specified at time of order.

Visit [www.conductix.us](http://www.conductix.us) for the most current information.