

# **mansaver®**

- **Powered horizontal ingot grabs for all applications**
- **Designed for safety and ease of use**
- **Available in any required load capacity**

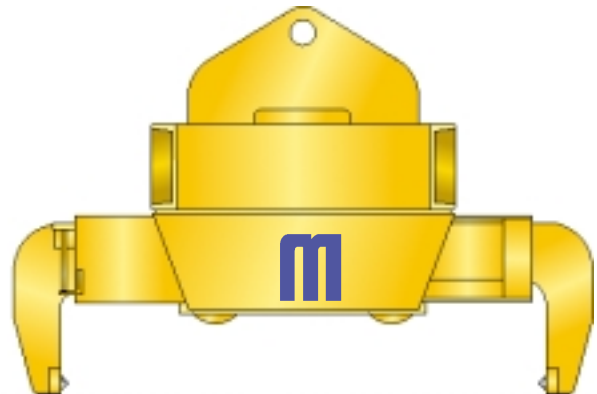
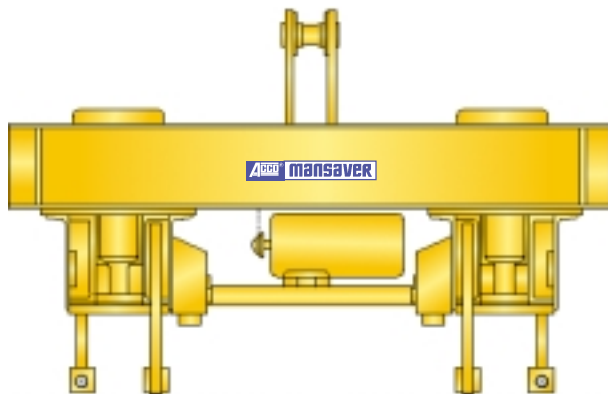
## **G1646 Horizontal Ingot Grabs**

### **G1646 MOTORIZED HORIZONTAL INGOT GRABS**

Mansaver® offers G1646 powered horizontal ingot grabs in both standard configurations or special designs to meet the specific requirements of your lifting applications.

This style of grab provides two distinct advantages in the handling of horizontal ingots, billets, or slabs. One, the required headroom is minimal when compared to the space required to operate tong style ingot grabs; two, this type of grab can handle a wide range of ingot widths.

All ACCO lifters conform to ASME B30.20 standards for below-the-hook lifters. Standard paint is ACCO safety yellow machine enamel.



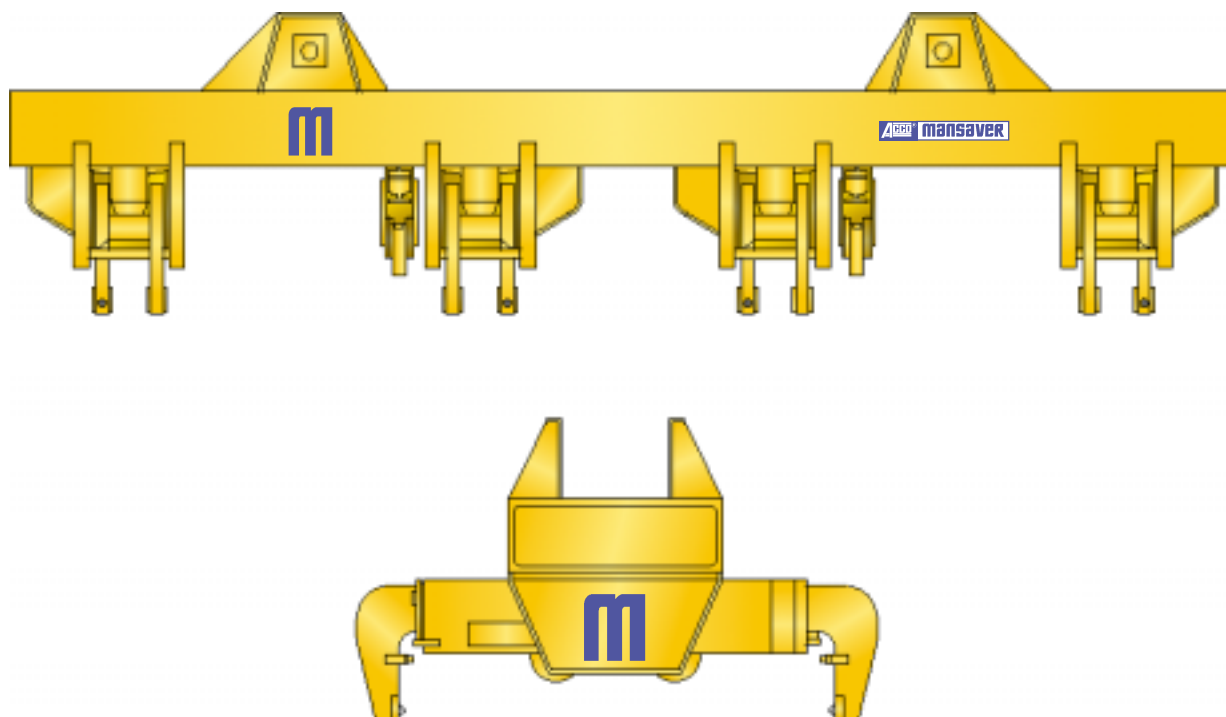
- **Four leg unit with roller style grab rests**
- **Single removable pin type bail**

*Authorized Sales & Service*  
**J. HERBERT CORPORATION**  
Call 1-800-255-0588  
407-846-0588 Fax: 846-1066  
info@jherbertcorp.com

**Visit us online:**  
[www.jherbertcorp.com](http://www.jherbertcorp.com)

**ACCO® 6.2.1**

# G1646 Horizontal Ingot Grabs

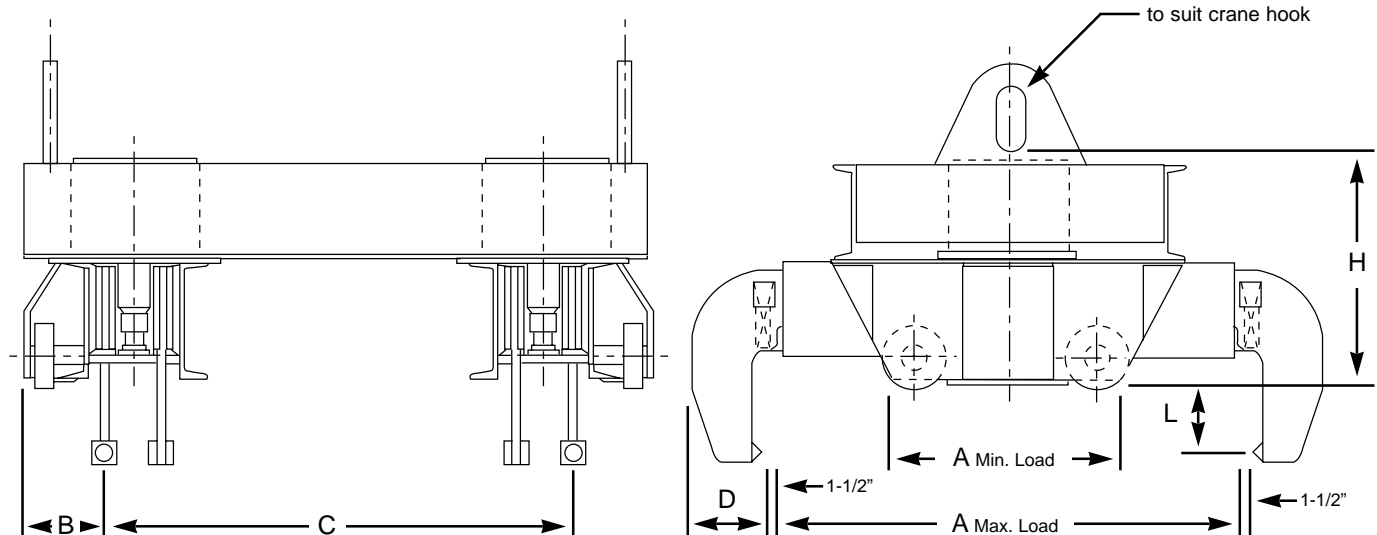


- Eight leg unit with roller style grab rests
- Sheave pocket suspension for direct connection to hoist

## Standard Ingot Grabs

Capacity in Tons	Ingot Width		Pt. Spread Min. C	Std. Leg Drop L	Leg Width D	Lifter Height H	B	Est. wt. lbs.
	Min. A	Max. A						
3	24	60	36	5	5	22	6	2,000
5	24	60	36	6	6	22	6	3,000
7-1/2	24	60	36	6	9	25	6	4,000
10	30	70	58	8	8	30	6	5,500
15	30	70	58	8	10	30	7	7,000
20	30	70	60	8	11	32	7	8,500
25	30	70	60	8	11	35	8	10,000

All dimensions shown are in inches and are approximate.



Authorized Sales & Service  
**J. HERBERT CORPORATION**  
 Call 1-800-255-0588  
 407-846-0588 Fax: 846-1066  
 info@jherbertcorp.com

Visit us online:  
[www.jherbertcorp.com](http://www.jherbertcorp.com)





# G1646 Horizontal Ingot Grab

## Selection Guide

All Mansaver® G1646 ingot grabs are designed to perform specific lifting tasks in conjunction with other lifting equipment. The grab examples and standard model descriptions on the pre-

ceding pages are intended to assist in determining what style grab is best suited to your lifting application. Please supply available application information and submit to the ACCO Mansaver®

sales department for pricing and further assistance in equipment choice.

All ACCO MANSAYER® Products meet or exceed ANSI B.30.20\* for "Below The Hook" lifting devices.

All ACCO MANSAYER® Products have a one year warranty on workmanship and materials.\*\*

\* Please refer to ANSI Standards B.30.20 and B.30.9 for all lifting applications and guidelines.

\*\* Consult the factory for further details.

### LOAD INFORMATION:

Load material: \_\_\_\_\_

Load size range: \_\_\_\_\_

Load temperature: \_\_\_\_\_

Maximum load weight: \_\_\_\_\_

### GRAB INFORMATION:

Required grab capacity: \_\_\_\_\_

Capacity of the hoist the grab will used with: \_\_\_\_\_

Grab suspension (pin or plate bails, king-pins, sheaves): \_\_\_\_\_

Suspension centers: \_\_\_\_\_

Options (load weight readout, powered rotation, other): \_\_\_\_\_

Lifting Hoist Hook Information on reverse side

**Clear Form**

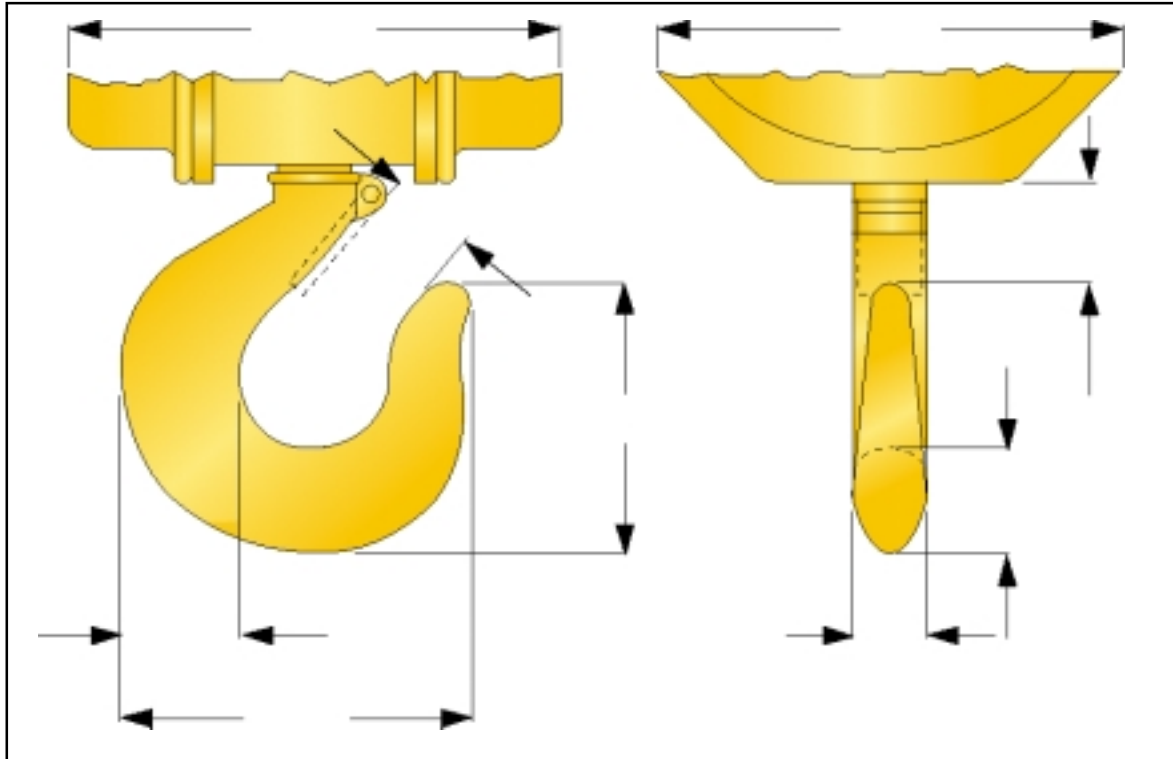
Authorized Sales & Service  
**J. HERBERT CORPORATION**  
Call 1-800-255-0588  
407-846-0588 Fax: 846-1066  
info@jherbertcorp.com

Visit us online:  
www.jherbertcorp.com

**ACCO® 6.2.5**

## Lifting Hoist Hook Information

*(Please Fill Out Completely)*



**Acco®** Acco Chain & Lifting Products Division

76 Acco Drive, Box 792, York, PA 17405  
Telephone 800-967-7333 Fax 800-715-8897  
[www.accolifting.com](http://www.accolifting.com)

PART OF THE **FKI** GROUP OF COMPANIES

**Acco®** 6.2.6

*Authorized Sales & Service*

**J. HERBERT CORPORATION**

Call 1-800-255-0588  
407-846-0588 Fax: 846-1066  
[info@jherbertcorp.com](mailto:info@jherbertcorp.com)

Visit us online:  
[www.jherbertcorp.com](http://www.jherbertcorp.com)