

mansaver®

- Mill duty heavy slab tongs
- Designed for safety and ease of use
- Available in any required load capacity

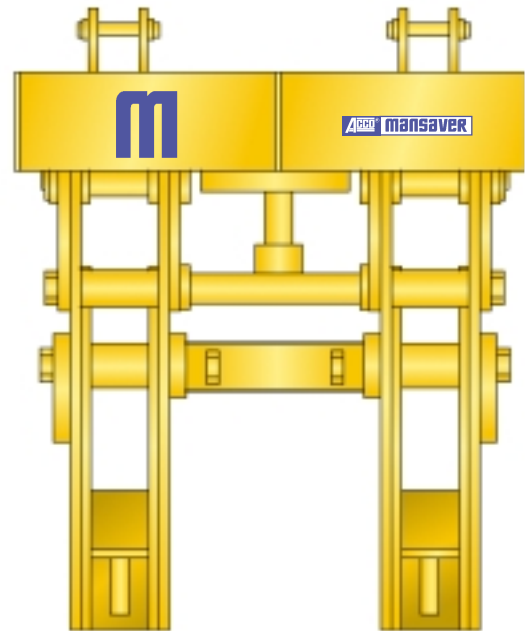
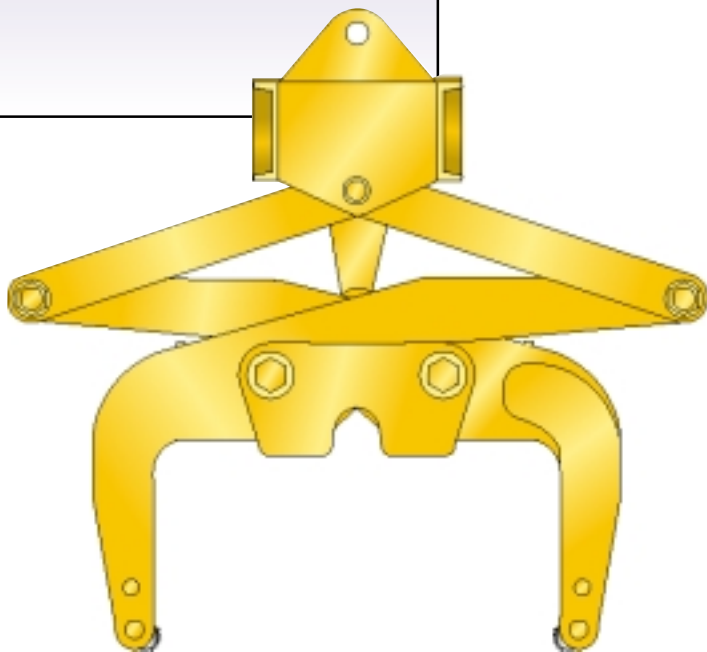
G1715 Heavy Slab Grabs

G1715 HEAVY SLAB GRABS

Mansaver® offers G1715 heavy slab grabs to meet the specific requirements of your lifting applications.

Single or multiple stacks can be handled with Mansaver® G1715 grabs. The grabs are opened and closed by on board hydraulic or hoist systems, or by separate external hoists.

All ACCO lifters conform to ASME B30.20 standards for below-the-hook lifters. Standard paint is ACCO safety yellow machine enamel.



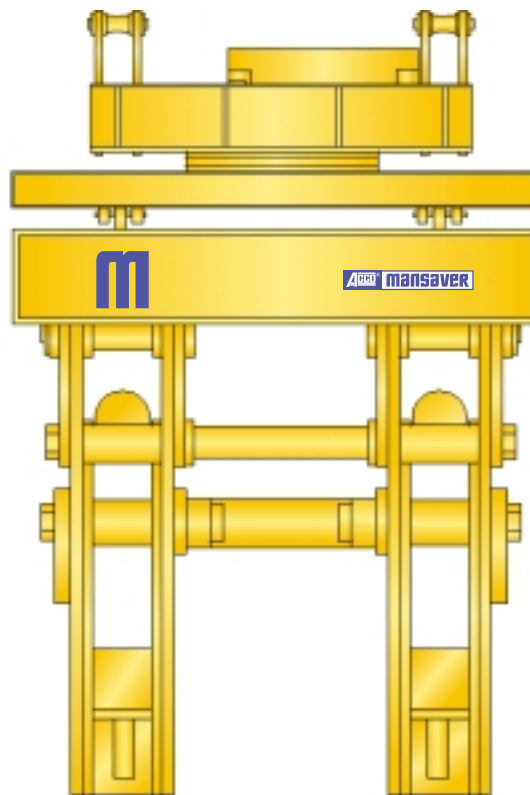
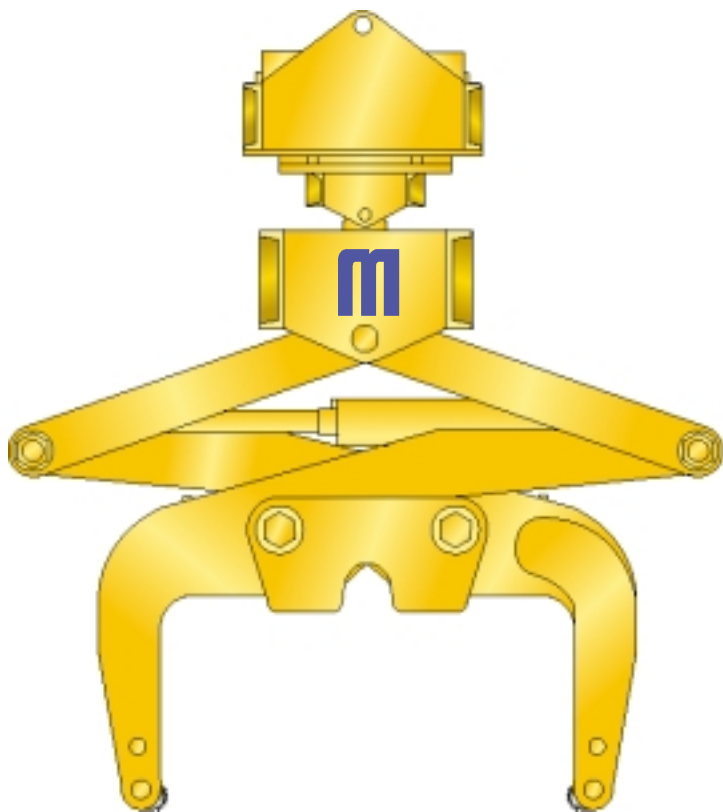
- Onboard hoist operated design
- Double bail suspension, pin type

Authorized Sales & Service
J. HERBERT CORPORATION
Call 1-800-255-0588
407-846-0588 Fax: 846-1066
info@jherbertcorp.com

Visit us online:
www.jherbertcorp.com

ACCO® 6.4.1

G1715 Heavy Slab Grabs



- Onboard hydraulic operated design
- Includes hydraulic power rotation



G1715 Heavy Slab Grabs

Selection Guide

All Mansaver® G1715 slab grabs are designed to perform specific lifting tasks in conjunction with other lifting equipment. The grab examples on the preceding page are intended to assist in

determining what grab is best suited to your lifting application. Please supply available application information and submit to the ACCO Mansaver® sales department for pricing and

further assistance in equipment choice.

All ACCO MANSAYER® Products meet or exceed ANSI B.30.20* for "Below The Hook" lifting devices.

All ACCO MANSAYER® Products have a one year warranty on workmanship and materials.**

* Please refer to ANSI Standards B.30.20 and B.30.9 for all lifting applications and guidelines.

** Consult the factory for further details.

LOAD INFORMATION:

Load material: _____

Load size range: _____

Load temperature: _____

Maximum load weight: _____

GRAB INFORMATION:

Required grab capacity: _____

Capacity of the hoist the grab will used with: _____

Grab suspension (single or double): _____

Suspension centers: _____

Bail style (plate, pin, sheaves, other): _____

Options (load weight readout, powered rotation, other): _____

Lifting Hoist Hook Information on reverse side

Clear Form

Authorized Sales & Service
J. HERBERT CORPORATION
Call 1-800-255-0588
407-846-0588 Fax: 846-1066
info@jherbertcorp.com

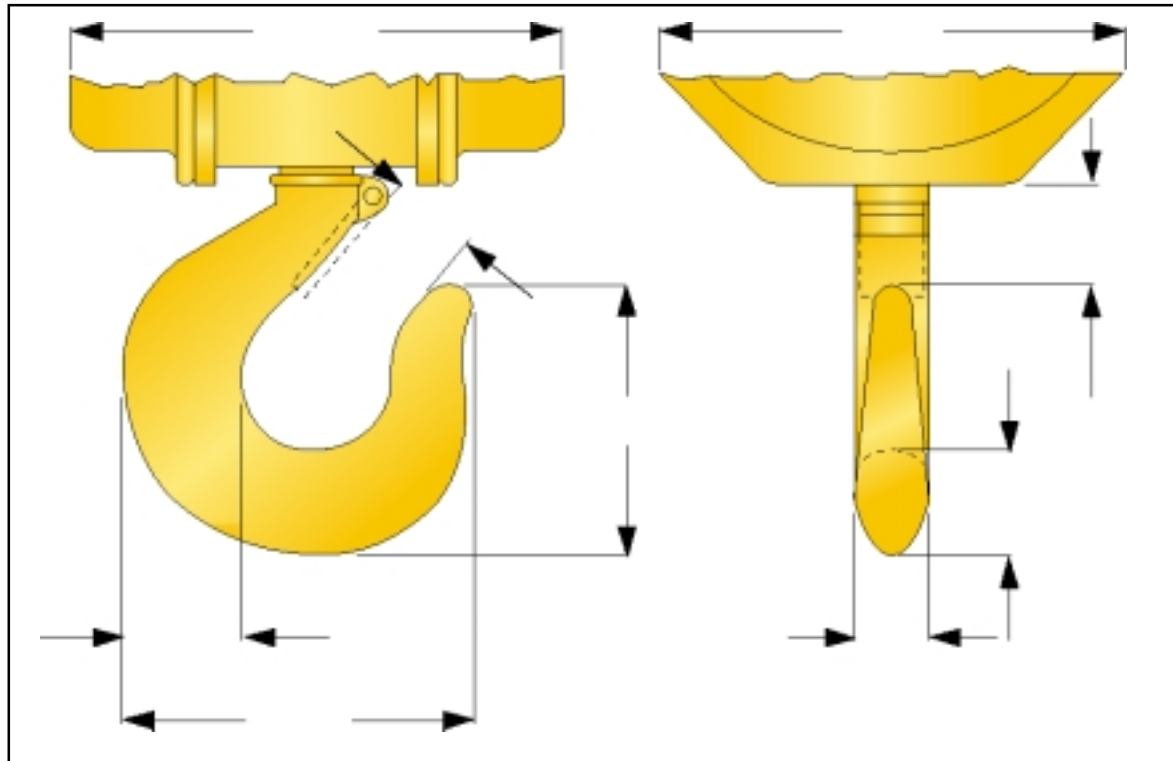
Visit us online:
www.jherbertcorp.com

ACCO® 6.4.3

G1715 Heavy Slab Grabs

Lifting Hoist Hook Information

(Please Fill Out Completely)



Acco® Acco Chain & Lifting Products Division
 76 Acco Drive, Box 792, York, PA 17405
 Telephone 800-967-7333 Fax 800-715-8897
www.accolifting.com

PART OF THE **FKI** GROUP OF COMPANIES

Authorized Sales & Service

J. HERBERT CORPORATION
 Call 1-800-255-0588
 407-846-0588 Fax: 846-1066
info@jherbertcorp.com

Visit us online:
www.jherbertcorp.com